

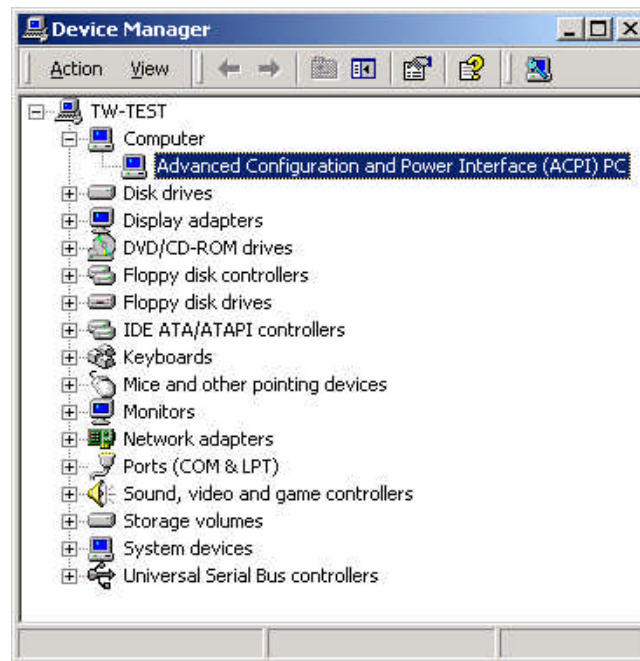
## Removing the ACPI under Windows 2000

If there are problems with the ACPI (Advanced Configuration and Power Interface) in most cases the removing of this driver can avoid this.

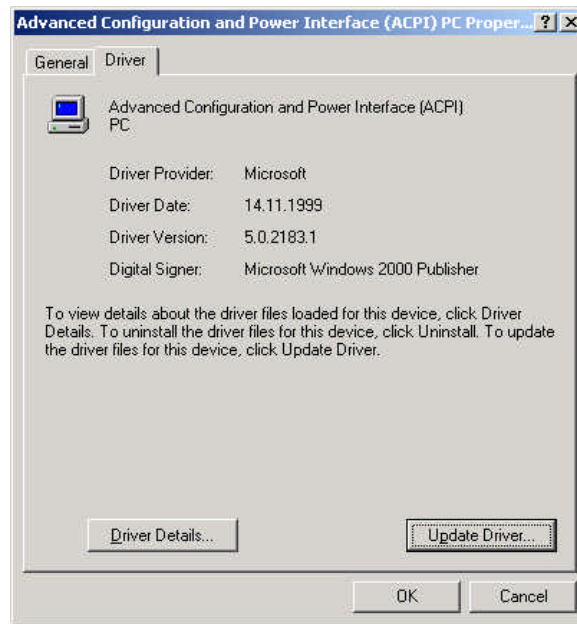
Microsoft suggest to do a new installation of Windows2000 to remove the ACPI but there is a method to remove it without a new installation. This method is not suggested by Microsoft but it was tested successfully in our house.

The fundamental is to change the driver in the device manager for the computer from **ACPI-PC** to **Standard-PC**.

To do that open the device manager of Windows2000 and look for for the entry **ACPI-PC**.



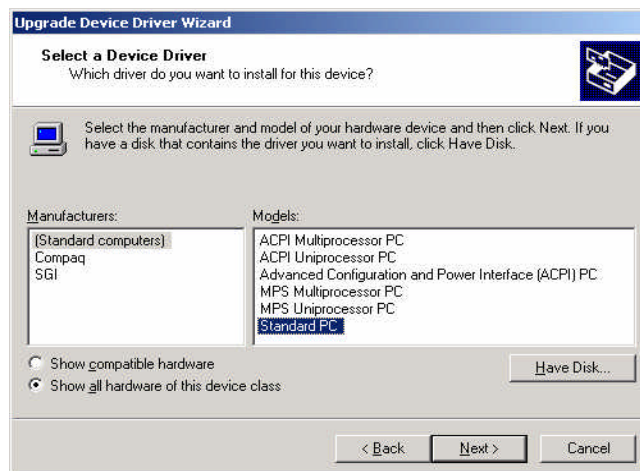
Mark this entry and open the properties.



Start the assistant for ... the device driver with the button ....

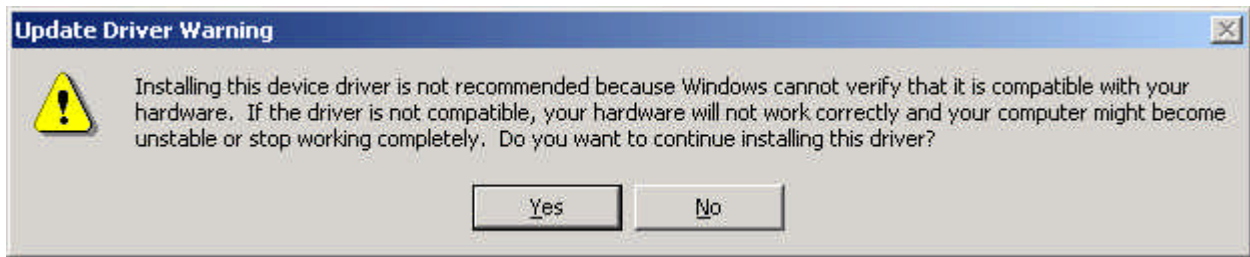


Let the assistant show you the list of all known drivers:



Mark the entry **Standard-PC** in the list and go on with the button **Next**.

A warning is shown that this method isn't suggested by Microsoft. Our experience shows us that this method will work in most cases.



Now the driver **Standard-PC** will be installed.

After rebooting the system it is possible that some hardware will be recognized and their drivers will be installed again. It is also possible that you have to reboot your system a second time.

Please be sure that the shown computer driver in the device manager is now **Standard-PC**.